

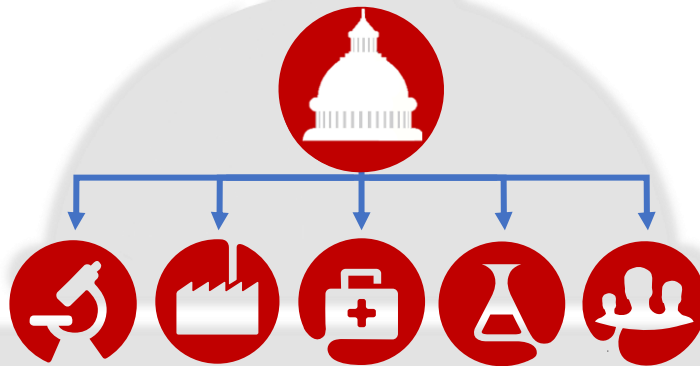


## Why Join the EMD Serono Political Action Committee (PAC)?

EMD Serono's employee PAC brings the voice of **EMD Serono employees** and the **patients we serve** to the forefront of healthcare discussions with **our nation's leaders**.

**PAC members receive** regular updates on political developments in Washington and have the **opportunity to network with company leadership** and **participate in special events** with political stakeholders.

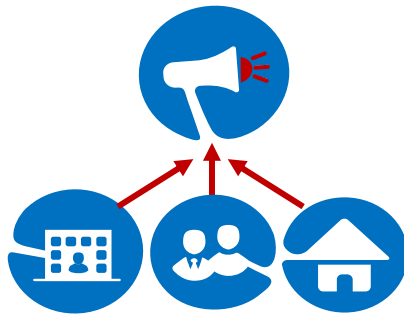
The government has an increasing impact on every area of our business.



From medical research and drug approvals to manufacturing, treatment, reimbursement, and patient access.

## How Does the PAC Work?

Taking a **bipartisan** approach, the PAC helps elect candidates who **support medical innovation & clinical advances** and who strive to protect patients.



Our PAC is our opportunity to **unite with a common voice** and ensure that we elect candidates who support issues affecting EMD Serono, our employees, patients, and communities.

For more information please contact [EMDSeronoPAC@emdserono.com](mailto:EMDSeronoPAC@emdserono.com)

DISCLOSURE: Contributions to EMD Serono PAC are not deductible as charitable contributions for federal income tax purposes. All contributions to the EMD Serono PAC are completely voluntary and will be used for political purposes. You have the right to refuse to contribute without reprisal. All contributions are subject to the limitations and prohibitions of the Federal Election Campaign Act, as amended. Individuals may not give more than \$5,000/year. Contribution guidelines are suggestions only. EMD Serono will not favor or disadvantage you based on whether you give more or less or not at all. Contributions may only be made by U.S. citizens or lawful permanent residents ("Green Card" holders). Federal law requires that EMD Serono PAC use its best efforts to collect and report the name, mailing address, occupation and name of employer of individuals whose contributions exceed \$200 in a calendar year.